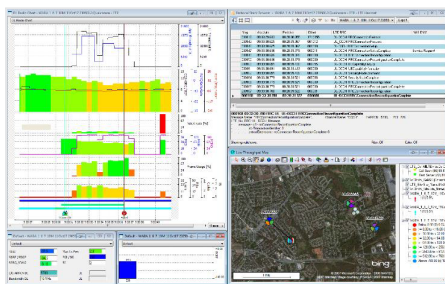




Actix Analyzer: the global standard in drive test data post-processing

Actix Analyzer or (as is widely known) Analyzer is the leading desktop solution for drive and walk test data post-processing. Introduced in 1997 as the world's first multi-vendor desktop solution for drive survey based analytics, Analyzer supports wireless network and device performance analysis, acceptance, benchmarking and optimization.



Used by over 300 network operators worldwide, including 25 of the top 30, Analyzer is recognized as the global standard in drive test data post-processing, and offers a number of key capabilities:

- **Truly multi-vendor:** support for all major drive/walk test data sources
- **KPI reporting:** advanced management-quality reports for network performance analysis and site acceptance
- **Automated (Spotlight) analysis:** embedded workflow for the automatic identification of typical issues
- **Ease of use:** map-centric visualization organized around the most common tasks of engineers
- **Data services analysis:** embedded workflow focusing on the issues impacting user experience
- **2G, 3G, 4G and Wi-Fi:** comprehensive support across wireless chipsets, devices and test equipment
- **Indoor analysis:** support for all major test equipment to enable in-building network performance analysis
- **Configurability:** streamlining new technology/service introduction, and enabling engineers to share expertise

These capabilities have been essential to the success of several mobile network launch and optimization projects worldwide since 1997. From GSM to LTE/LTE-A, Analyzer helps operators assess network performance and

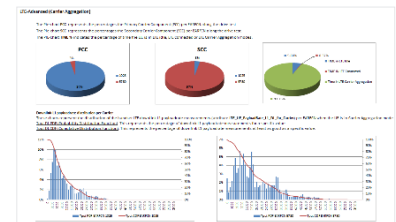
identify issues that affect service quality and customer experience.

Truly multi-vendor

Analyzer is a multi-vendor solution that actively supports all major drive test equipment vendors across radio technologies. By recognizing and normalizing measurement data of different formats, Analyzer can provide engineers with a consistent network performance view irrespective of the logging tool used.

KPI reporting

Library of KPI reports: validation/acceptance reports on the network coverage, quality and capacity performance.



Microsoft Excel integration: for spreadsheet based analysis and reporting, using templates created and shared by engineers.

Flexible KPI definition: powerful event and query engines to build virtually any KPI from network/service measurements.

Automated (Spotlight) analysis

The Spotlight module provides reporting, automated trouble-shooting and radio coverage analysis to help engineers resolve and report on network performance issues faster, by eliminating time-consuming data manipulation and manual deduction.

Call event explorer: highlights the cause of failure events, and provides engineers with the ability to drill down and analyze issues in detail.

